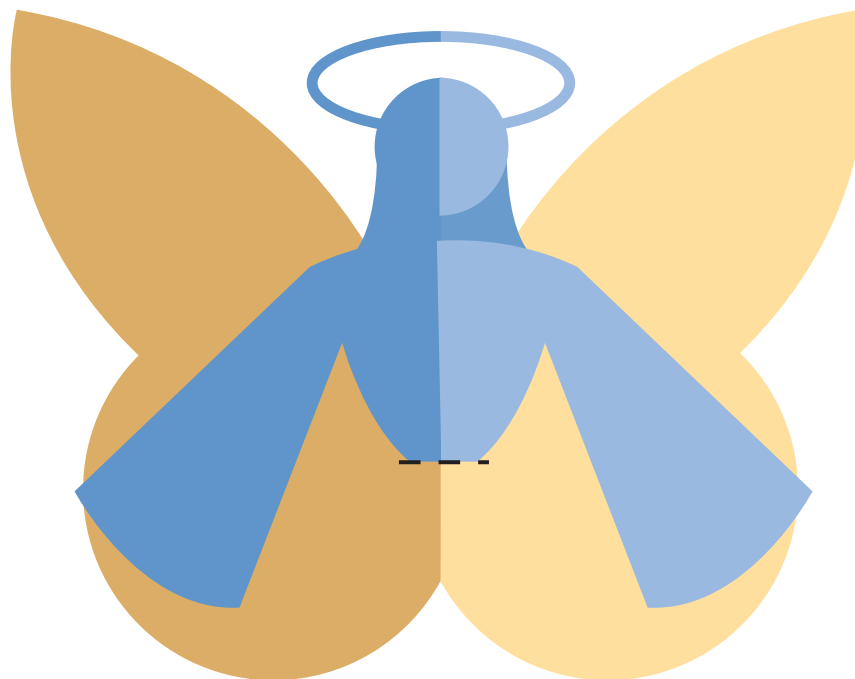
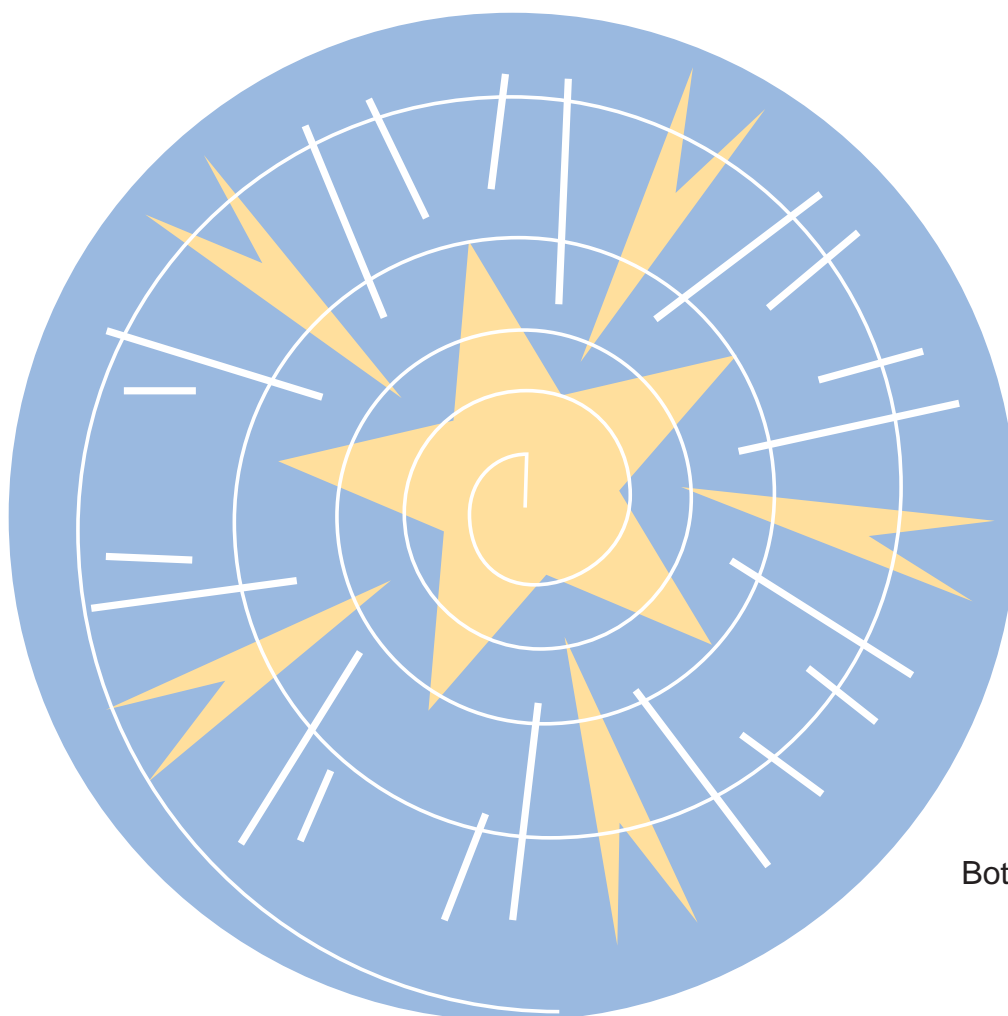


1. Print the ornament on stiff paper or card stock.
2. Cut the two sections out.
3. With a craft knife, cut a slit in the top section marked by the black line.
4. Using scissors, cut along the spiral shaped white line on the bottom section.
5. Insert the innermost part of the bottom section into the slot in the top section. Affix with glue or tape.
6. Insert a threaded needle just below the halo and pull the string through. Remove the needle and tie the string to make a loop.



Top Section



Bottom Section